

## PD COMBO 65W QI CHARGING STATION



### PRODUCT DESCRIPTION

The PD Combo 65 QI Charging Station is an integrated in-desk power grommet that combines essential features for efficient workspace connectivity. Designed to fit seamlessly into a standard 80mm desk grommet hole, this unit enhances any office environment.

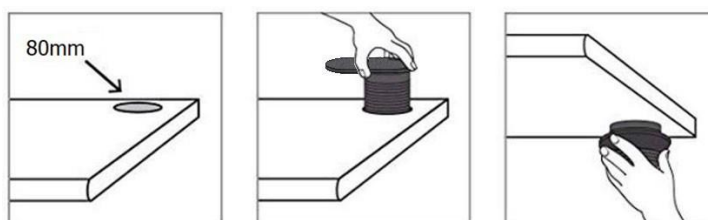
#### Key Features:

- **UK Socket:** Provides convenient access to standard power outlets.
- **USB A+C Charger:** Equipped with both USB-A QC 3.0 (9V/2A, 5V/3A) and USB-C 65W PD (20V/3A) ports, allowing simultaneous charging of various devices.
- **Wireless 15W QI Charger:** Enables wireless charging for compatible devices.

Installation is straightforward: a simple 80mm nut secured beneath the desk (suitable for desk thicknesses ranging from 10mm to 65mm) ensures quick and stable placement. The PD Combo 65 QI Charging Station is ready for use with a START mains lead.

Available in elegant black and white finishes, this grommet seamlessly integrates functionality and aesthetics, making it an excellent addition to any modern office setup.

### INSTALLATION



Fit unit into an 80mm cut-out from above, without the screw collar. Once inserted, attach the screw collar from below and tighten

## STANDARD PRODUCTS

### Part Code

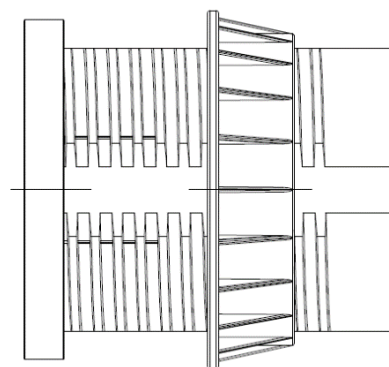
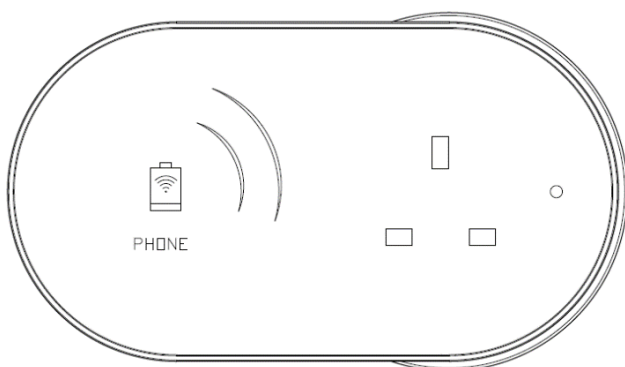
PD COMBO/65/QI-B  
PD COMBO/65/QI-W

### Description

PD Combo 65W QI Charging Station in Black  
PD Combo 65W QI Charging Station in White

## USAGE & MAINTENANCE

UK socket not to be used with products and appliances exceeding 5A  
Fuses are user resettable, and must be reset using a tool such as a small screwdriver  
To clean unit, disconnect from the mains, and wipe with a clean damp cloth



## TECHNICAL SPECIFICATION

Unit dimensions	165mm x 90mm, 115m deep
Construction	PVC extrusion, PVC sockets and fascia's
Max voltage	240Vac
Fuse	Resettable 5A thermal fuse
Mains connector	20A male 3-pole connector
USB	Dual A&C 65W USB smart charger
Conformities	BS 5733, BS 6396:2022
Flammability	UL940V, IP20
Compliances	RoHS; WEEE; CE; UKCA

